



# Industrial Hardware item Specification Continues Hinge

Part Number-YS-CH-01

3D View

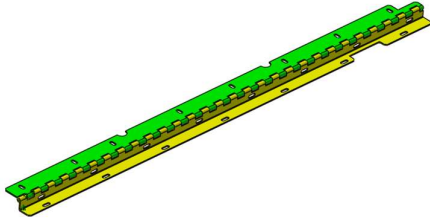
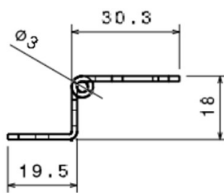


Photo View



Right view  
Scale: 1:1



Front view  
Scale: 1:1

## Specification

Material: CRCA

Thickness: 1.5mm

Finish: Trivalent Yellow

All Diminutions are in mm

## Industrial Hardware item Specification Continues Hinge

Part Number YS-CH-06

3D View

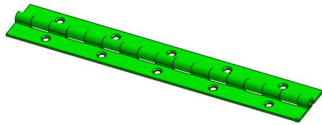
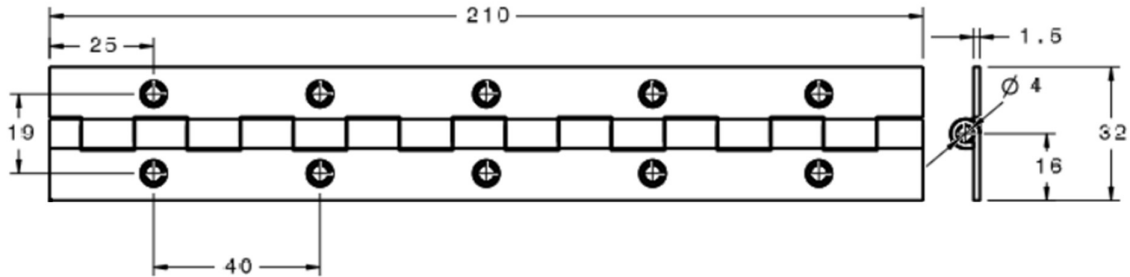
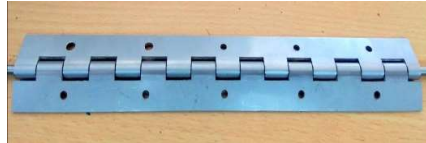


Photo View



Front view  
Scale: 1:1

Right view  
Scale: 1:1

### Specification

Material: SS 304 AMS 5513

Thickness: 1.5mm

All Diminutions are in mm



# Industrial Hardware item Specification Continues Hinge

Part Number YS-CH-15

3D View

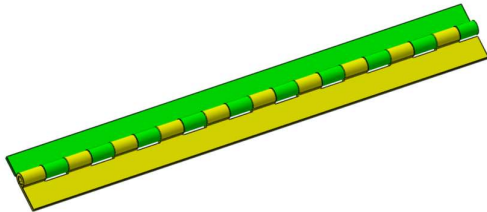
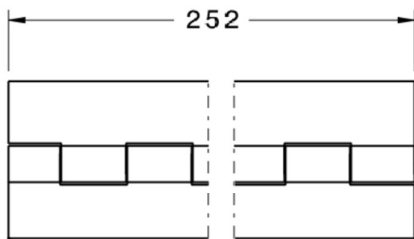
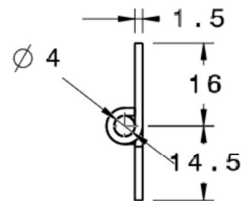


Photo View



Front view  
Scale: 1:1



Right view  
Scale: 1:1

## Specification

Material: SS 304

Thickness: 1.5mm

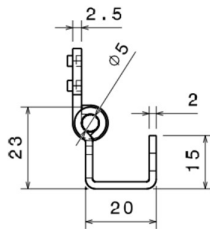
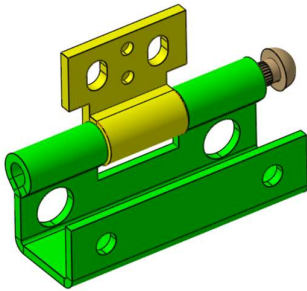
All Diminutions are in mm



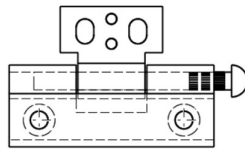
## Industrial Hardware item Specification Panel Door Hinge

Part Number – YS-H-24

### 3D View



Front view  
Scale: 1:1



Right view  
Scale: 1:1

### Specification

Material: CRCA – IS 2062

Thickness: 2mm

Finish : Zinc plating

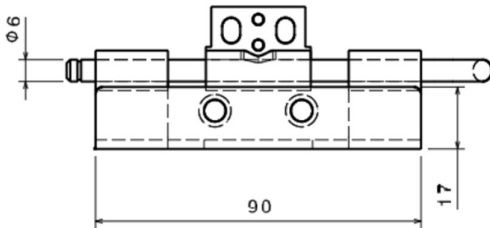
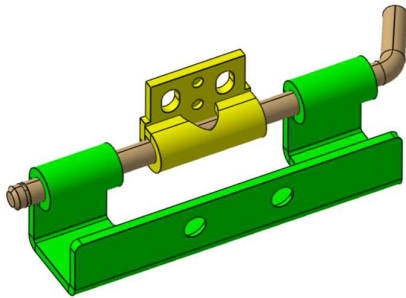
All Diminutions are in mm



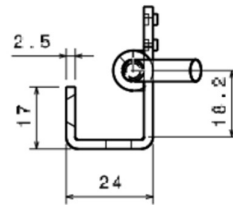
## Industrial Hardware item Specification Panel Door Hinge

Part Number – YS-H-60

### 3D View



Front view  
Scale: 1:1



Right view  
Scale: 1:1

### Specification

Material: CRCA – IS 2062

Thickness: 2.5 mm

Finish : Zinc plating

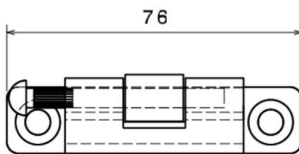
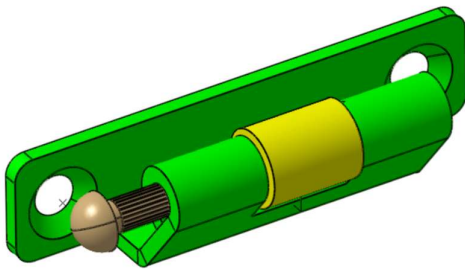
All Diminutions are in mm

## Industrial Hardware item Specification

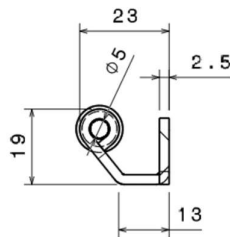
### Panel Door Hinge

Part Number – YS-H-24

#### 3D View



Front view  
Scale: 1:1



Right view  
Scale: 1:1

#### Specification

Material: CRCA – IS 2062

Thickness: 2.5 mm

Finish : Zinc plating

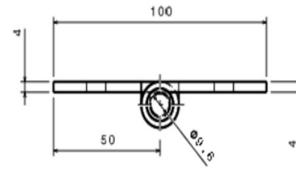
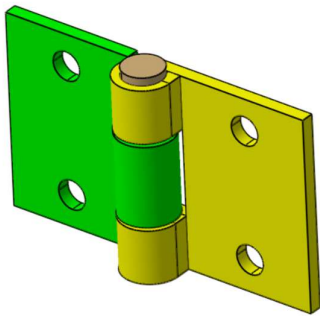
All Diminutions are in mm



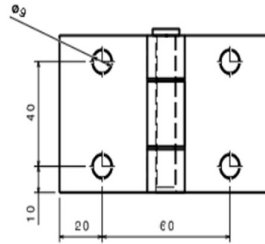
## Industrial Hardware item Specification Panel Door Hinge

Part Number – YS-H-231

### 3D View



Top view  
Scale: 1:1



Front view  
Scale: 1:1

### Specification

Material: HR – IS 2062

Thickness: 4 mm

Finish: N/A

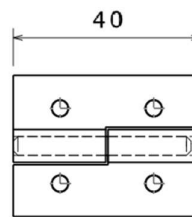
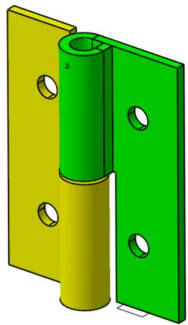
All Diminutions are in mm



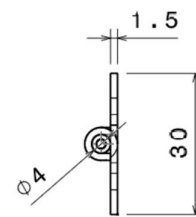
## Industrial Hardware item Specification Slip Apart/Take- Apart Hinge

Part Number – YS-H-240

### 3D View



Front view  
Scale: 1:1



Right view  
Scale: 1:1

### Specification

Material: SS 304

Thickness: 1.5 mm

Finish: N/A

All Diminutions are in mm

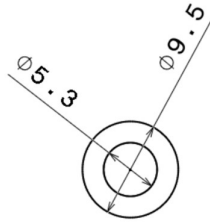
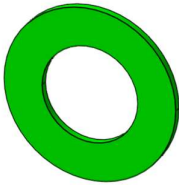




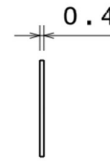
## Industrial Hardware item Specification Panel Door Hinge

Part Number – YS\_W\_15

### 3D View



Front view  
Scale: 2:1



Right view  
Scale: 2:1

### Specification

Material: CR – IS 2062

Thickness: 0.4 mm

Finish: As per customer specification

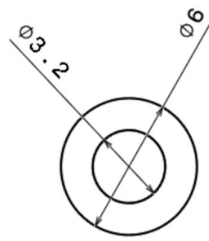
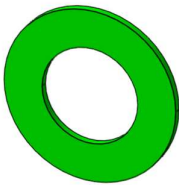
All Diminutions are in mm

## Industrial Hardware item Specification

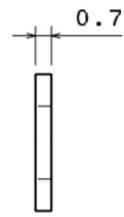
### Copper Washer

Part Number – YS\_W\_42

#### 3D View



Front view  
Scale: 5:1



Right view  
Scale: 5:1

#### Specification

Material: Copper EC Grade 99%

Thickness: 0.7 mm

Finish: Silver

All Diminutions are in mm

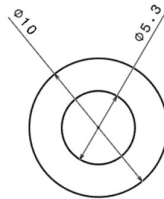
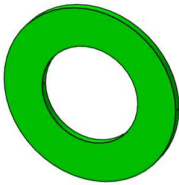


## Industrial Hardware item Specification

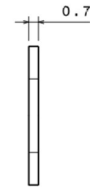
### Brass Washer

Part Number – YS\_W\_33

#### 3D View



Front view  
Scale: 5:1



Right view  
Scale: 5:1

#### Specification

Material: Brass Washer

Thickness: 0.7 mm

Finish: As per Customer Requirement

All Diminutions are in mm